



Luxury Homes

Property For Sale In Hua Hin



If you are on the lookout for some of the best property's for sale in Hua Hin, you can contact The Bibury Property. As one of the most reliable property companies in Hua Hin, we take care of the exact needs of each customer in a responsible way. No matter whether you want to build your dream home or construct an investment property, we have got your needs covered.



NUMBER OF PLOTS
29 HOMES



LAND AREA
FROM 550 SQ.M.



MODERN
DESIGN



GREAT
LOCATION



VILLA PINE

3 Bedrooms | 2 Bathrooms | 8 x 4 Pool

This luxury villa offers the peace and tranquillity of a real tropical hideaway, together with all the modern conveniences you'd expect from a luxury home, free powerful solar cells is of course also included for your convenience on the roof & the villa is designed with low maintenance in mind.

The fully equipped designer kitchen flows right to the pool terrace, makes it convenient for outdoor alfresco dining & BBQ under the stars. The superior & spacious master bedroom comes with direct pool access for all those early morning dips while watching the mountain in the distance & that never fails to impress.



Land Area:	550 SQM
Internal Area:	117 SQM
Terrace:	28.6 SQM
Total Living Area:	145.6 SQM



VILLA TEAK

3 Bedrooms | 3 Bathrooms | 8 x 4 Pool

The full covered terrace is easy accessible from the kitchen & living room to make dining out side convenient and easy. The designer kitchen comes fully fitted with modern appliances & the living room features a state-of-the-art entertainment area. The roof is carefully designed with powerful solar cells, to make living under the sun enjoyable & cool under the inverter air cons installed in every room.

The Villa boasts architecture inspired by Scandinavian design, and this minimalist, attractive yet functional appearance is echoed throughout the decor & furnishings of the property.



Land Area: 550 SQM

Internal Area: 132 SQM

Terrace: 65 SQM

Total Living Area: 197 SQM

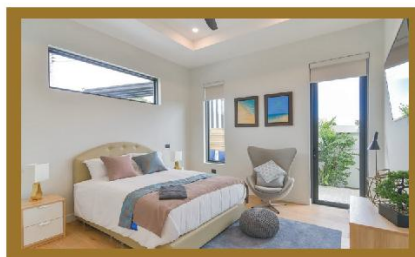


VILLA PALM

3 Bedrooms | 2 Bathrooms | 9 x 4 Pool

Villa Palm, offers 263 m2 of living space inclusive of a large open plan living room. The outdoor terrace area features a giant up scaled 9 x 4 meter-long saltwater swimming pool. You are awaited by the outdoor terrace with wonderful outdoor relax area & ideal for getting guests while appreciate the magnificent view over the natural surroundings with a spectacular panoramic view over the nearby mountains.

The large well-appointed master bedroom comes with a free-standing designer bathtub & with direct access to the upscale build-in walk-in-closet & on suite bathroom with a giant rain shower overlooking the pool area.



Land Area: 570 SQM

Internal Area: 154 SQM

Terrace: 75 SQM

Total Living Area: 229 SQM



VILLA OAK

3 Bedrooms | 4 Bathrooms | 10 x 4 Saltwater Pool

the largest & most luxuries modern villa we offer, with a generous 293 m2 of living space & tree spacious on suite bedrooms. Open plan living room with high ceilings connected into the kitchen & dining area, only divided with a half wall & separate floor levels, giving the room a great look & feeling.

All rooms have direct access to the saltwater pool & terrace area. Gigantic glass windows from floor to ceiling gives an extremely distinctive room sense of light & space. The exceptional Master bedroom design, comes with connected private bathroom & walk in closet.



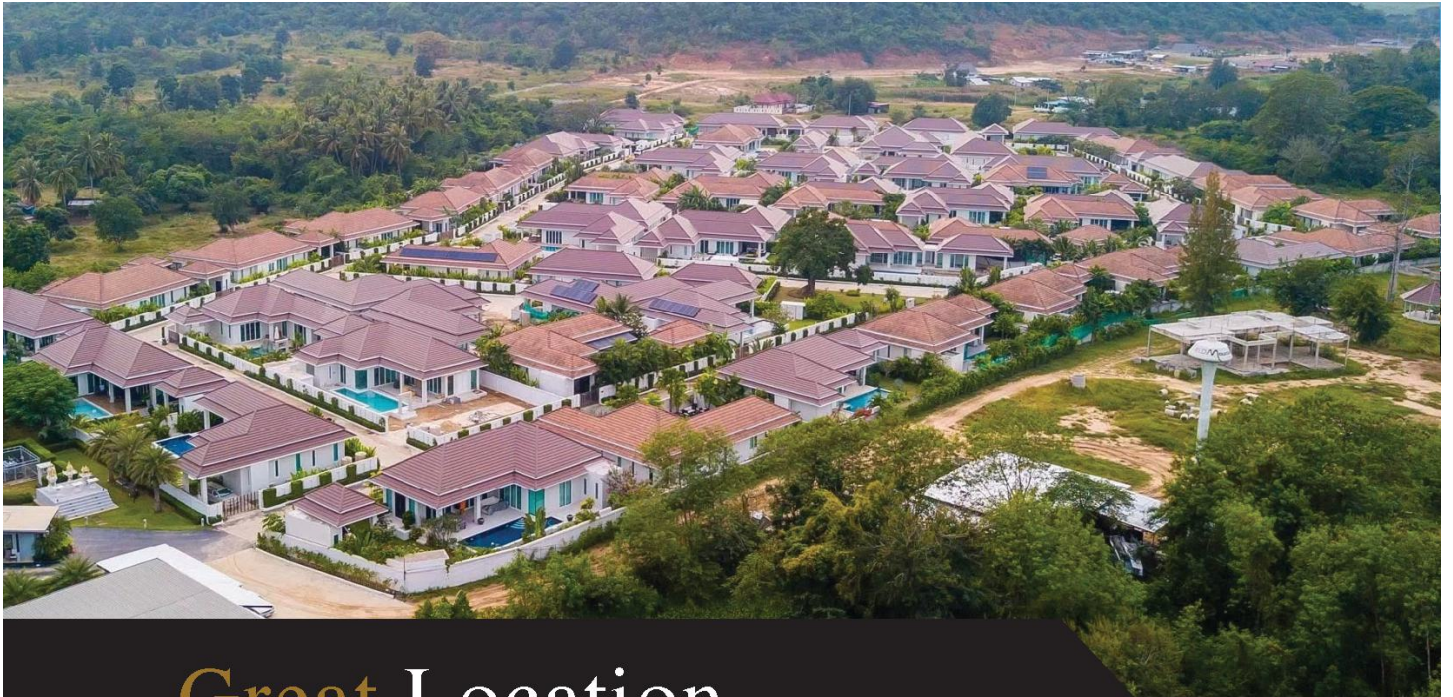
Land Area: 570 SQM

Internal Area: 178 SQM

Terrace: 92.5 SQM

Total Living Area: 270.5 SQM

* These house pictures is for advertise, the design might be changed during developing and decorating. Please visit our website for 3D models and more detail.



Great Location

Luxury Home is located only 9 km from central Hua Hin in a stunning, elevated mountainous area with a natural river. The location benefits from a constant cooling breeze, blooming lush landscapes, and thriving wildlife while still benefiting from modern infrastructure. The nearest restaurants are all well within 3 km and most have European management and/or chefs. For those that prioritize fitness, the area is ideal for walking, cycling and jogging.

The location boasts close proximity to top golf courses (Banyan, Black Mountain, Royal Thai Golf Course, etc ...), the bypass to Bangkok (making the drive from Red Mountain to Bangkok well under 2.5 hours), and all services such as laundry, convenience stores, salons, cafes and so on, are all within an easy 5 minute drive. It is also within easy reach of the Black Mountain water park. Luxury Home will build with two words in mind: luxury and comfort. With more than 7 villas you can choose from, The Bibury Luxury Home really offers all the tranquility and relaxation you are looking for. Even more than that, it ensures that the breathtaking landscape surrounding the villas from all sides is never altered by "modern technology" as well.

Luxury Home is the type of place you want to turn to when you are seeking real relaxation, far from the madding crowd. Surrounded by peaceful scenery and in a location where silence is treasured more than anything, a villa here will give you the peace of mind you have always wanted to have in the big city – but could never actually achieve.

Even so, every single thing you may need will be within access, from the excellent water park in Hua Hin to the marvelous beaches in town as well. There is absolutely no way you can get bored living here, as Hua Hin can provide you with every single type of entertainment you may want!





ECO Friendly

We want to go green with solar panels

“ Renewable and environmentally friendly ”



Inverter air conditioners are more powerful, offer great savings and are better at maintaining temperature compared to non-inverter air conditioners

When the inverter air conditioning is switched on, the compressor operates at a high speed in order to cool or heat the room quickly. As the room temperature approaches the set temperature, the compressor slows down, maintaining a constant temperature and saving energy. Inverter air conditioning usually use between 30-50% less electricity to operate

LEDs (Light Emitting Diodes) are solid light bulbs which are extremely energy-efficient and can reduce electricity consumption by up to 80% over conventional lighting systems with longer lifetimes by up to three years or more.





Guaranteed by many awards

Key Features Of The Project

- ✔ Smart Home Technology
- ✔ Land Allocation License, full ownership
- ✔ Reliable Government Water & Electric Supply
- ✔ 8 M Project Concrete Roads
- ✔ Gated & Secure Community
- ✔ Luxury Finishing Products & Brands
- ✔ Multi-Lingual Site Manager
- ✔ 10 Minutes From Down Town
- ✔ Underground Pest Control
- ✔ INVERTER Air Conditioning
- ✔ American Standard Sanitary
- ✔ European Standard Electrical System
- ✔ European Designer Kitchen
- ✔ Landscaped Garden & Sprinkler System
- ✔ 10 Years Developer History +180 houses Sold
- ✔ Multi Awarding Winning Developer
- ✔ Fitness Room
- ✔ Communal Tropical Park With Running-track
- ✔ Kids Playground
- ✔ Private & Secure Community
- ✔ Professional Rental Scheme Program Available
- ✔ Off Plan Custom Build Villa Designs Possible
- ✔ Mountain Scenery In Prime Location
- ✔ Electric Steel Gates
- ✔ Professional Legal Advisors & Contracts
- ✔ Roof Insulation
- ✔ Shuttle Bus
- ✔ Alarm & CCTV System



NISASIRI GROUP

R E A L E S T A T E



Our exclusiv Partners in Luxembourg



00352-691 360 320

Francois Olivier

olivierfrancislux@gmail.com

www.luxpolinter.eu

www.sura.lu



00352-621 164 674

Ghys Joel

info@immomobil@gmail.com



Real Estate Business
& Investments Consulting Company

Administrateur : Marc MASCOVECCHIO

[Webside : www.rbi.lu](http://www.rbi.lu)

Mobil : 00352-691 346 520

rbi@pt.lu